

# FR1200

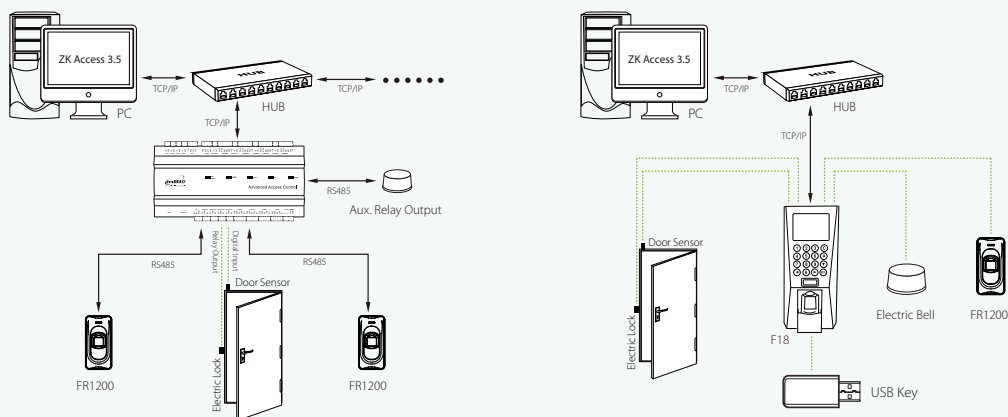
FR1200, a fingerprint reader with RS485 communication interface works with biometric access controllers and fingerprint standalone access control, including inBIO series controllers, F8 and so on. It offers the function of capturing and transferring fingerprint samples to access control panel. With its IP65 rated rugged structure, FR1200 offers extra durability in all weather conditions including outdoor environments.



## Specifications

<b>CPU</b> 324MHz	<b>Standard Function</b> ID Card Module	<b>Working Voltage</b> 12VDC	<b>Size</b> <b>Height:</b> 102mm
<b>Sensor</b> ZK small-sized sensor	<b>Optional Function</b> MF Card Module	<b>Working Temperature</b> 0°C ~ 45°C	<b>Width:</b> 50mm
<b>Communication</b> RS485	<b>Voice Prompt</b> Buzzer	<b>Protection Grade</b> IP65	<b>Depth:</b> 37mm

## Configuration



ZKTeco Inc.  
ZK Mansion, Wuhe Rd, Gangtuo, Bantian, Buji Town,  
Longgang District, Shenzhen China 518129  
Tel: 86-755-8960 2345/46/47/48  
E-mail: sales@zkteco.com  
www.zkteco.com

**Global Offices:**  
USA: +1 732-412-6007  
EU: +34 916532891  
Brazil: +55 31 2515-8326  
Thailand: +66-027199154  
Mexico: +52-55-52928418

South Africa: +27 12 259 1047  
Egypt: +201110444134  
Dubai: +971 4 6091 310  
India: +91 8123536788  
Indonesia: +62 21 2921 8949

Vietnam : +84-0169-5813007  
Philippines: +63 9084118832  
Russia: +8 915 178-46-81